

WALL CABINET TOOL KITS **2**

166PC METRIC/SAE CUSTOM SERIES WALL CABINET TOOL KIT

Model No.	Colour
SP50851	BLACK

DIMENSIONS:

1 Drawer Wall Tool Cabinet
755w x 305d x 830h

(1340w with doors open)

- 1 Drawers 640w x 270d x 60h



FEATURES:



EVA Foam Storage System



Lockable Drawer and Tool Drawer

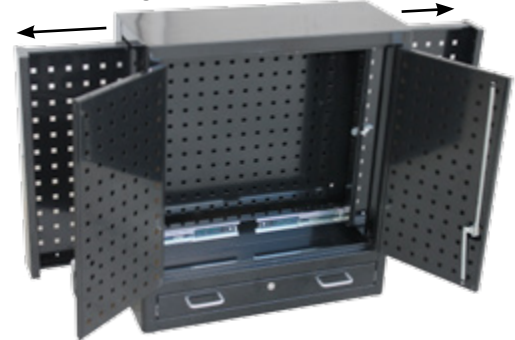


Adjustable Heavy Duty Tool Hooks



Dual Internal Sliding Tool Boards

Internal Sliding Tool Board



CONTENTS:

1/4" Dr Sockets & Accessories

- 12pt - 4, 5, 6, 7, 8, 9, 10, 11, 12 & 13mm
- 12pt - 3/16, 7/32, 1/4, 9/32, 5/16, 11/32, 3/8, 7/16 & 1/2"
- 45T Ratchet & Flex Handle
- Extension Bars - 50 & 150mm

3/8" Dr Sockets & Accessories

- 12pt - 8, 10, 11, 12, 13, 14, 15, 16, 17, 18 & 19mm
- 12pt - 5/16, 3/8, 7/16, 1/2, 9/16, 5/8, 11/16 & 3/4"
- Spark Plug Sockets - 5/8 & 13/16"
- 45T Ratchet & Flex Handle
- Extension Bars - 75 & 150mm
- Adaptors - 3/8Fx1/4M & 3/8Fx1/2M

1/2" Dr Sockets & Accessories

- 12pt Deep - 10, 11, 12, 13, 14, 15, 16, 17, 19, 21, 22 & 24mm
- 12pt Deep - 3/8, 7/16, 1/2, 9/16, 5/8, 11/16, 3/4, 13/16, 7/8, 15/16 & 1"
- 45T Ratchet & Flex Handle
- Extension Bars - 75 & 125mm
- Adaptors - 1/2Fx3/8M

Wrench / Spanners

- Combination - 8, 9, 10, 11, 12, 13, 14, 15, 16, 17, 18 & 19mm
- 5/16, 3/8, 7/16, 1/2, 9/16, 5/8, 11/16, 3/4 & 7/8"

Tools

- Screwdrivers - 3.0x75, 5.5x100, 6.5x25, 6.5x100, 6.5x150 & 8.0x175mm
- #0x60, #1x80, #2x25, #2x100, #2x150 & #3x175MM
- Hex Keys - 1.5, 2, 2.5, 3, 4, 5, 6, 8 & 10mm
- - 1/16, 5/64, 3/32, 1/8, 5/32, 3/16, 1/4, 5/16 & 3/8"
- TORX - T10, T15, T20, T25, T27, T30, T40, T45 & T50
- Ratchet Driver Set - Bit Driver, Phillips #1, #2 & #3 Bits, Slotted 4.5mm & 7mm Bits & TORX T15 & T20 Bits
- Pliers - Combination (2), Long Nose, Locking (2) & Multigrip
- Cutters - Diagonal (2)
- Adjustable Wrench (3)
- Hammers - Ball Pein (2)
- Hacksaw & Tape Measure
- Pry Bar Set - 4pc
- Custom Series Wall Cabinet

CONTENTS GUIDE:



Images are for illustration purposes only, contents may vary.