



3.6v SCREWDRIVER

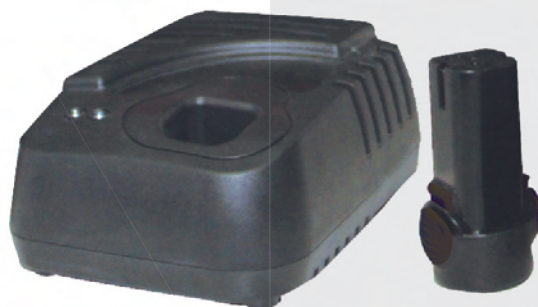
MODEL: SP81201
3.6v Screwdriver



SP81201



Reference:
SP81970
3.6v Charger
SP81972
3.6v Battery
Refer page 250 for more details



- Two speed gear box
- Clutch torque control with 16 section
- Aluminium housing
- Lock device for changing from straight to pistol
- Forward/reverse switch
- Soft grip design
- Quick change bit retainer
- Charging Time: 1 hour auto cut-off (±10min)

- Contents:**
- 3.6v Screwdriver
 - 2pc x 1.5Ah Li-Ion Batteries
 - 1pc Battery Charger
 - Protective Blow Mould Storage Case

3.6v Screwdriver

Model No.	Barcode	Voltage	No-Load Speed	Torque	Clutch	Weight	Price \$
SP81201	9330514041437	3.6 Volt	Low 220/min rpm High 450/min rpm	Low 6N-m High 3N-m	16 Sections	0.428kg (With Battery)	